

DAMBUSTERS

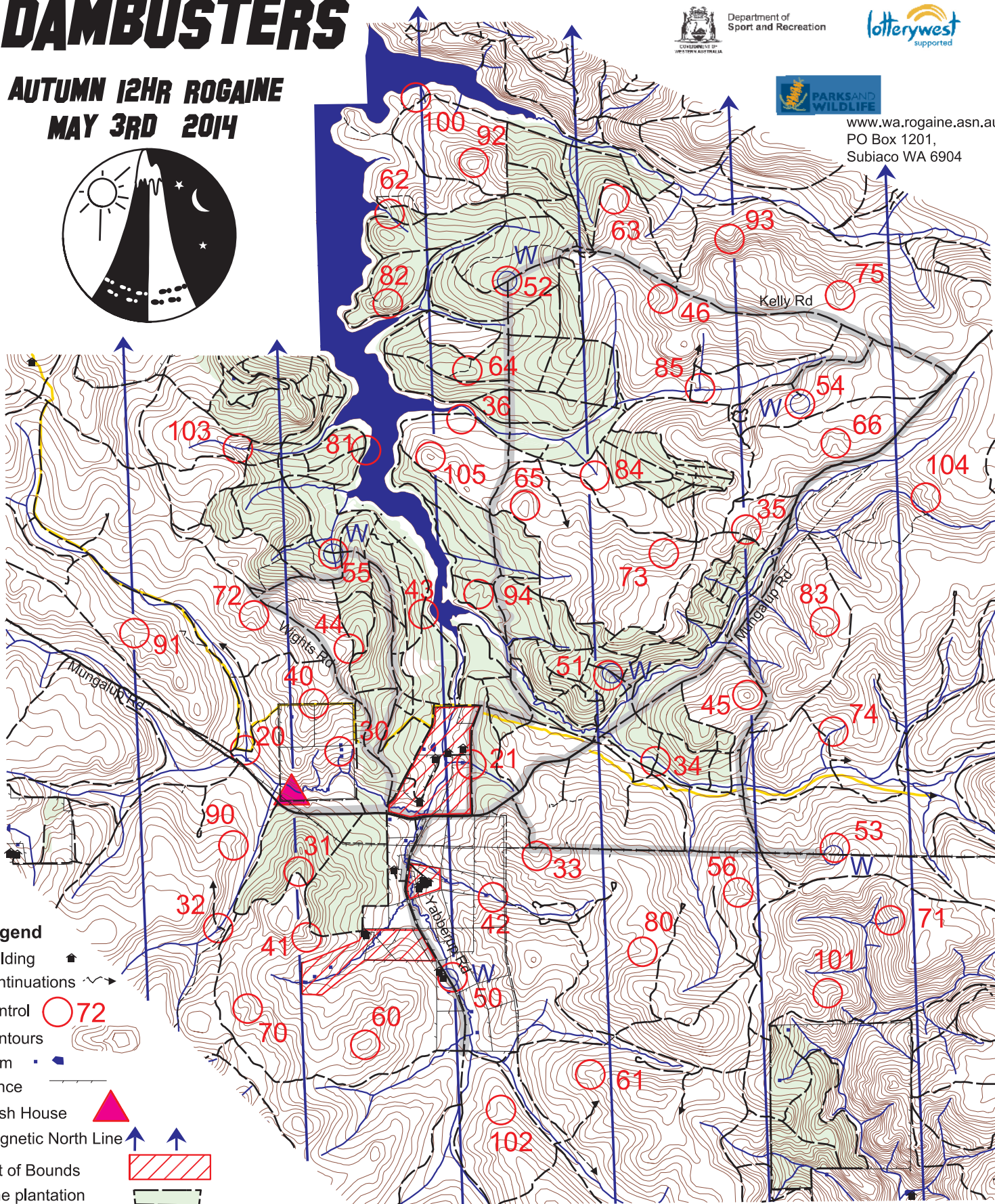
**AUTUMN 12HR ROGAINE
MAY 3RD 2014**



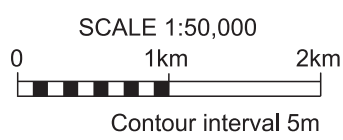
Department of Sport and Recreation



www.wa.rogaine.asn.au
PO Box 1201,
Subiaco WA 6904



- Legend**
- Building
 - Continuations
 - Control
 - Contours
 - Dam
 - Fence
 - Hash House
 - Magnetic North Line
 - Out of Bounds
 - Pine plantation
 - Patrolled Road
 - Road, Sealed
 - Road, Major Gravel
 - Road, Minor Gravel
 - Wellington Spur Trail
 - Watercourse
 - Water Drop



Emergency satellite number +881 622 449700
Warren "The Saint" 0407 773 697

Setting Team
Jeff "The Legend" Conrades
Ian "SONS" Thomsett
Vicki Redden
Craig Dermer

Thanks to:
Leon Price - DPaw
Farmers:
Tony and Lyn Pitts
Jack and Bill Smith

Event No.
163

*Mr Rogaine
April 2014*

This map was produced using OCAD 9 by the Western Australian Rogaining Association, wa.rogaine.asn.au. Data supplied by Landgate and used under copy licence 393/93. Possession of this map does not give right of entry to this area.

DAMBUSTERS 12 HR ROGAINE

May 3rd 2014

No.	Description	Points	No.	Description	Points	Important Information
20	The watercourse/track junction.	20	70	The spur	70	Control Cards From 9.30am Saturday
21	The watercourse/fence junction	20	71	The watercourse	70	
30	The middle dam - south western corner	30	72	The shallow gully	70	Briefing 9.45am Saturday
31	The track bend - north side	30	73	The shallow gully	70	
32	The track/watercourse junction - southern side	30	74	The watercourse	70	Start 10am Saturday
33	The shallow gully	30	75	The gully	70	
34	The track/watercourse junction	30	80	The gully	80	Finish 10pm Saturday
35	The gully	30	81	The track junction - eastern side	80	
36	A track junction - 50m at 180 degrees	30	82	The knoll	80	Hash House Opens at 5pm Sat. Closes by 11pm Sat.
40	The knoll (Steve's view)	40	83	The gully	80	
41	The spur	40	84	Head of the watercourse - a spring (Legend's triumph)	80	Sunset 5.36 pm
42	The watercourse	40	85	The watercourse junction	80	
43	The track junction - north eastern side	40	90	The shallow gully - head of	90	Moonrise 10.17 am
44	The spur	40	91	The saddle	90	
45	The knoll	40	92	The knoll	90	Moonset 8.54 pm
46	The gully - head of	40	93	The gully	90	
50	The watercourse bend	50	94	The shallow gully	90	Late Penalty 10 points per minute or part minute. DSQ if later than 10.30 pm
51	The gully	50	100	The spur	100	
52	The track junction - 50m at 340 degrees	50	101	A saddle	100	Controls Used 53
53	The small gully.	50	102	The spur	100	
54	A gravel clearing 80x40m - southern edge	50	103	The watercourse	100	Total Points 3250
55	The track/watercourse junction - south side	50	104	The spur	100	
56	The gully	50	105	The knoll	100	
60	The summit	60				
61	The spur	60				
62	The watercourse	60				
63	The broad spur	60				
64	The track bend	60				
65	The knoll (slippery but don't ask why)	60				
66	The gully	60				
Water Drops: At controls 50,51,52,53,54,55 If you are injured please make your way to a water drop or a patrolled road and wait there for help						